



BAM Property

November 2021

TSX-V: PGLD

Forward-Looking Information

This presentation contains "forward-looking information" within the meaning of applicable securities laws that is intended to be covered by the safe harbors created by those laws. "Forward-looking information" includes statements that use forward-looking terminology such as "may", "will", "expect", "anticipate", "believe", "continue", "potential" or the negative thereof or other variations thereof or comparable terminology. Such forward-looking information includes, without limitation, the Company's expectations, strategies and plans for the BAM Property, including the Company's planned expenditures and exploration activities.

Forward-looking information is not a guarantee of future performance and is based upon a number of estimates and assumptions of management at the date the statements are made. Furthermore, such forward-looking information involves a variety of known and unknown risks, uncertainties and other factors which may cause the actual plans, intentions, activities, results, performance or achievements of the Company to be materially different from any future plans, intentions, activities, results, performance or achievements expressed or implied by such forward-looking information. See "Risk Factors" in the Company's annual information form dated August 9, 2021 filed on SEDAR at www.sedar.com for a discussion of these risks.

The Company cautions that there can be no assurance that forward-looking information will prove to be accurate, as actual results and future events could differ materially from those anticipated in such information. Accordingly, investors should not place undue reliance on forward-looking information. Except as required by law, the Company does not assume any obligation to release publicly any revisions to forward-looking information contained in this presentation to reflect events or circumstances after the date hereof.

Quality Assurance

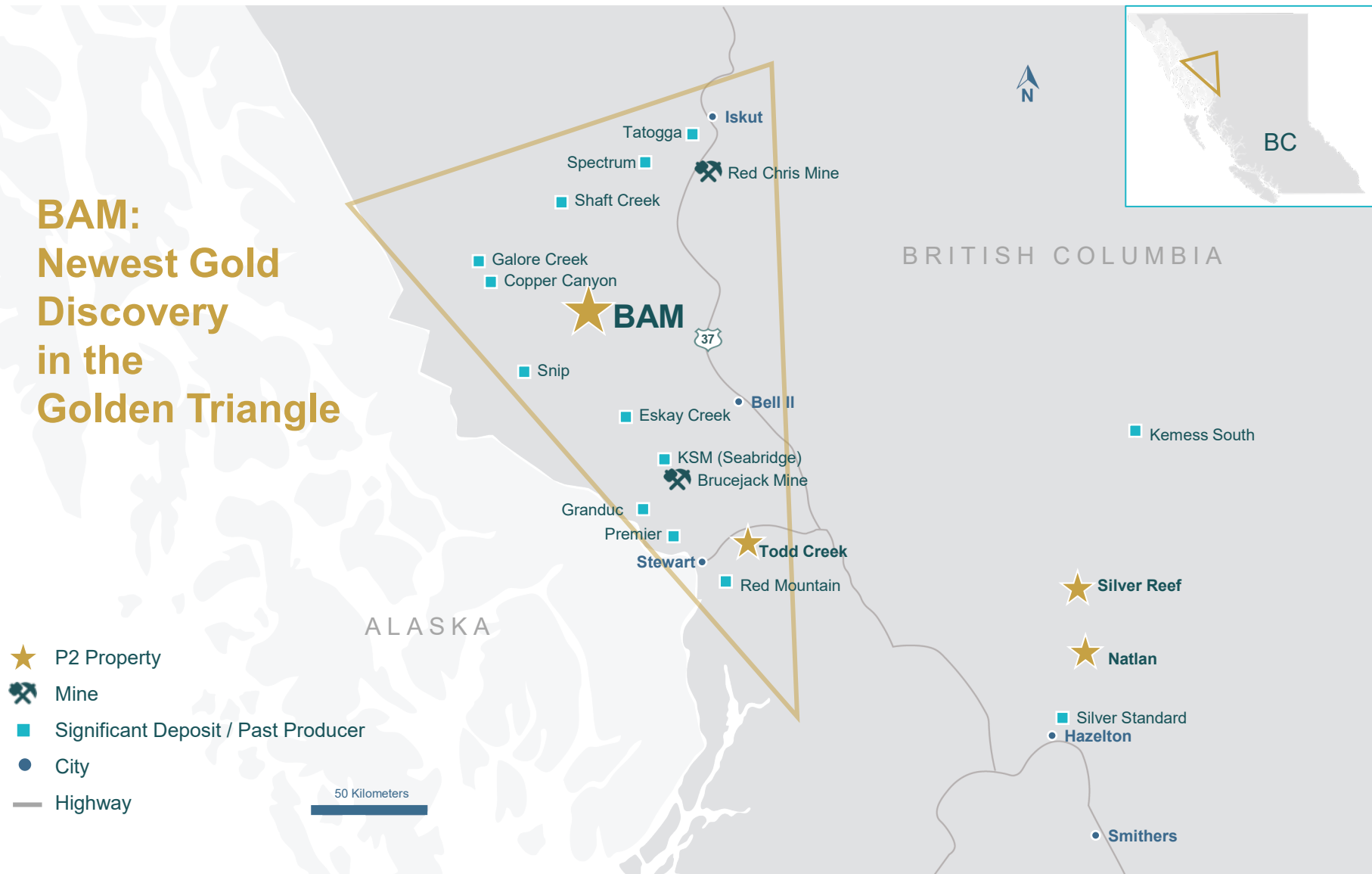
Ken McNaughton, P.Eng. is the qualified person responsible for the BAM Property and has reviewed, verified and approved the scientific and technical information in this presentation relating to the BAM. Mr. McNaughton is the Chief Exploration Officer and a Director of the Company and is a "qualified person" as defined by NI 43-101.

Currency

Unless otherwise indicated, all dollar values herein are in Canadian dollars.

P2's Grassroots Exploration Properties – British Columbia

BAM: Newest Gold Discovery in the Golden Triangle



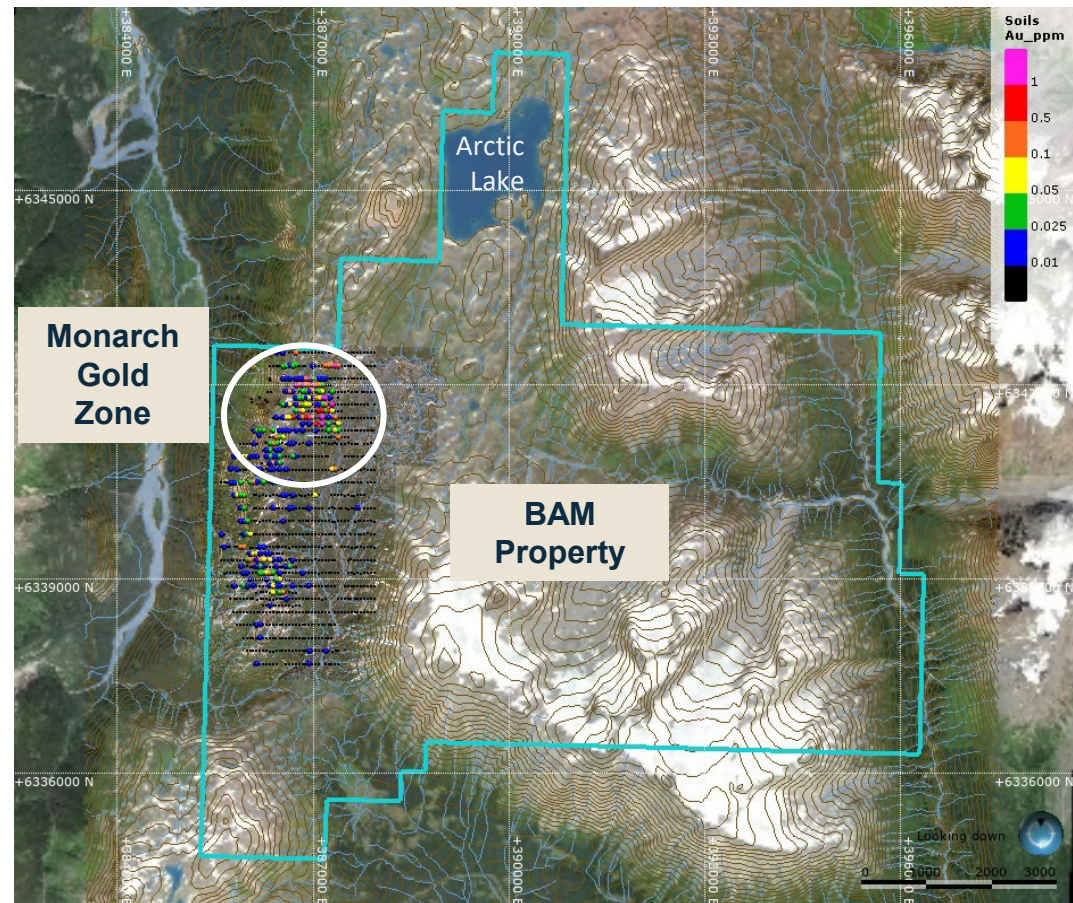
Good Access, Infrastructure

- < 2 km from Galore Creek access road
- Northwest Transmission Line approximately 35 kilometers to the east
- Highway 37 approximately 35 kilometers to the east



BAM 2020 Exploration Program⁽¹⁾

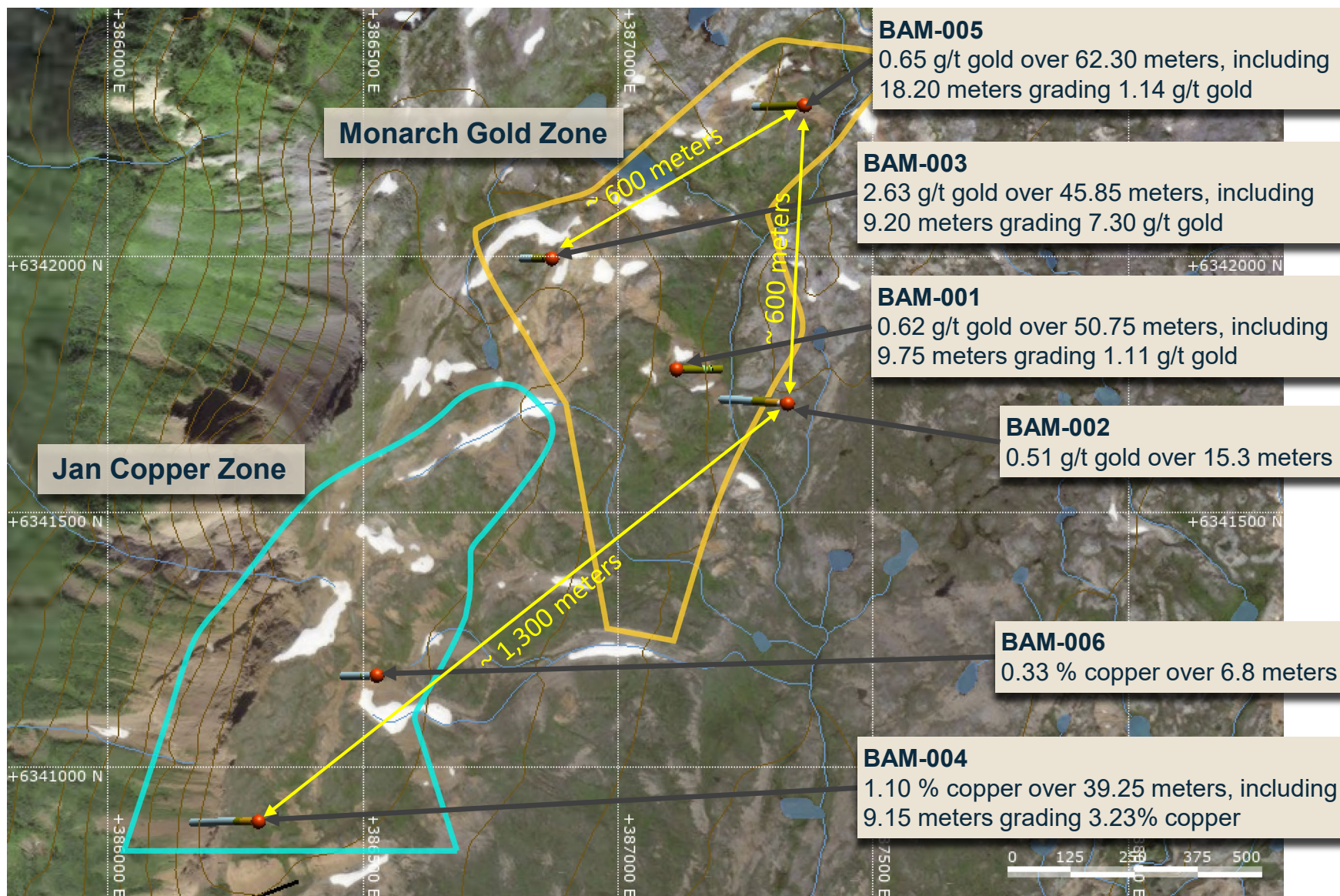
- The 2020 exploration program at BAM included:
 - Airborne geophysical program (~500 line km)
 - Ground geophysical program (~15 line km)
 - Geochemical sampling
 - approximately 1,100 samples over an area of 2 km x 4.8 km
 - 16 samples assayed greater than 500 ppb (0.50 g/t) gold with the highest-grade sample assaying 5,730 ppb (5.73 g/t) gold
 - **Discovered Monarch Gold Zone**
 - Geologic mapping and prospecting



1) See News Release dated October 8, 2020 for BAM Property exploration program results.

BAM - 2021 Drill Program

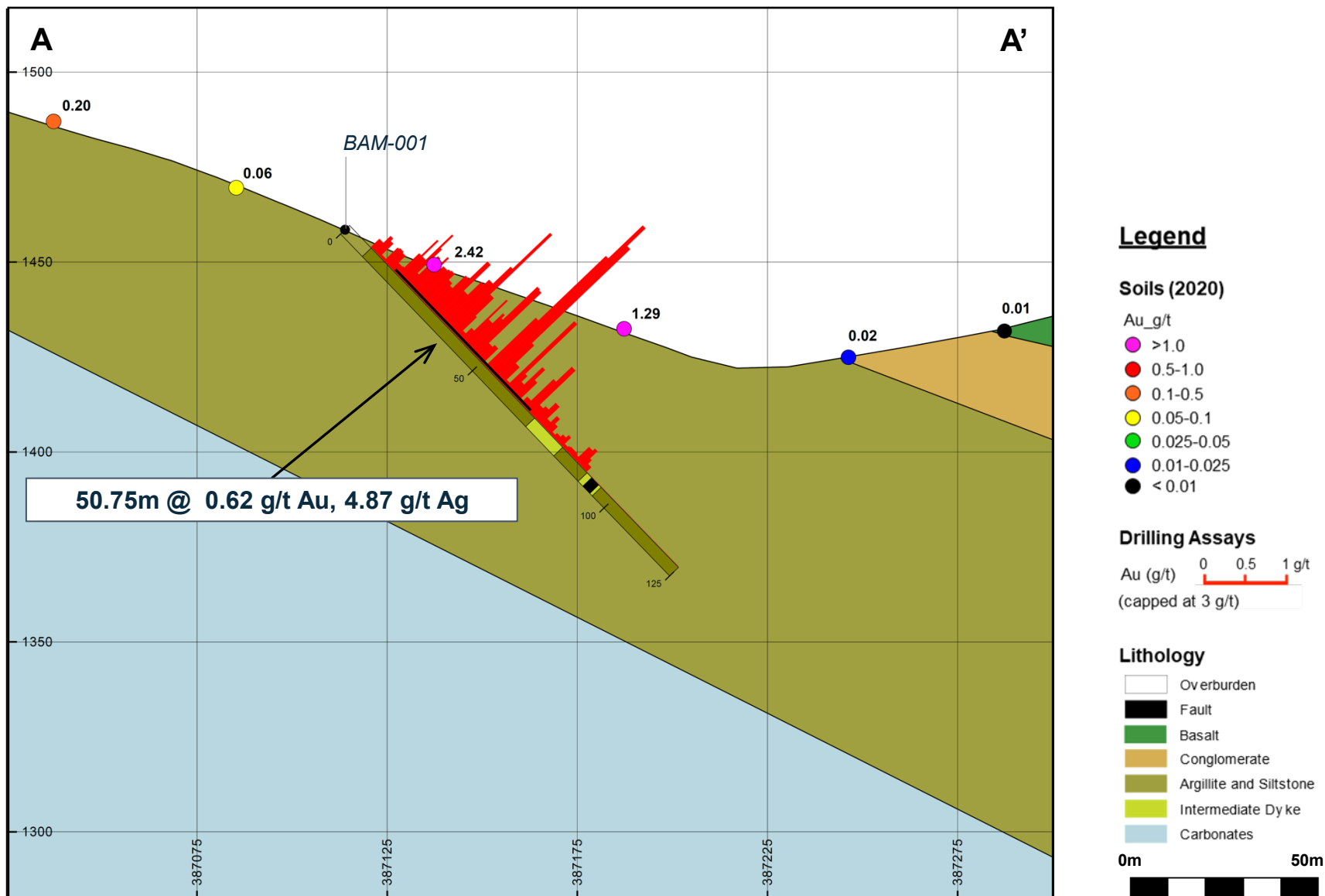
Plan View with Drill Holes and Zones⁽¹⁾



1) See P2 Gold news release dated August 30, 2021 and October 6, 2021 for BAM Property drill results.

BAM - 2021 Drill Program⁽¹⁾

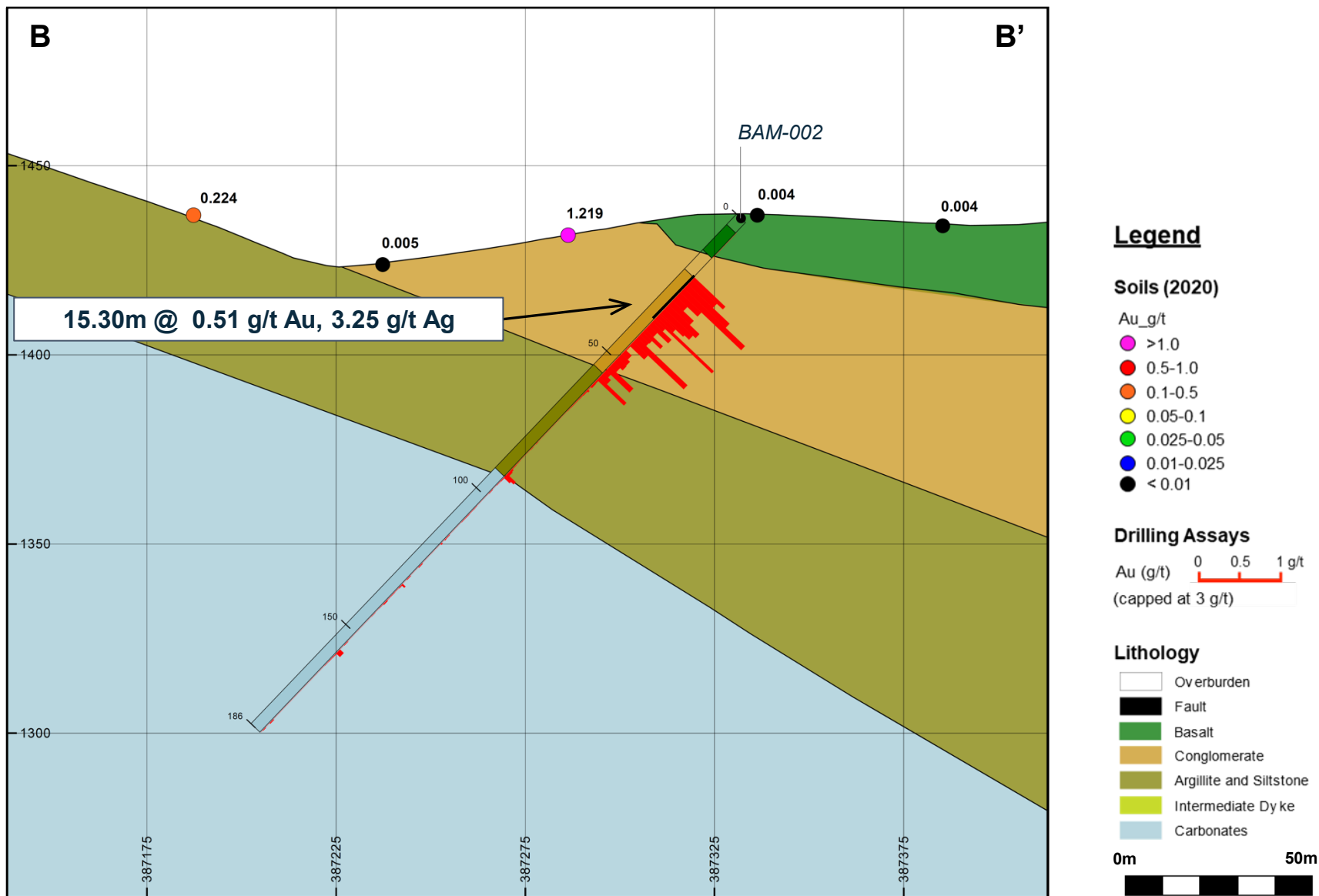
BAM-001; Section A-A' – Looking North



1) See P2 Gold news release dated August 30, 2021 for BAM Property drill results.

BAM - 2021 Drill Program⁽¹⁾

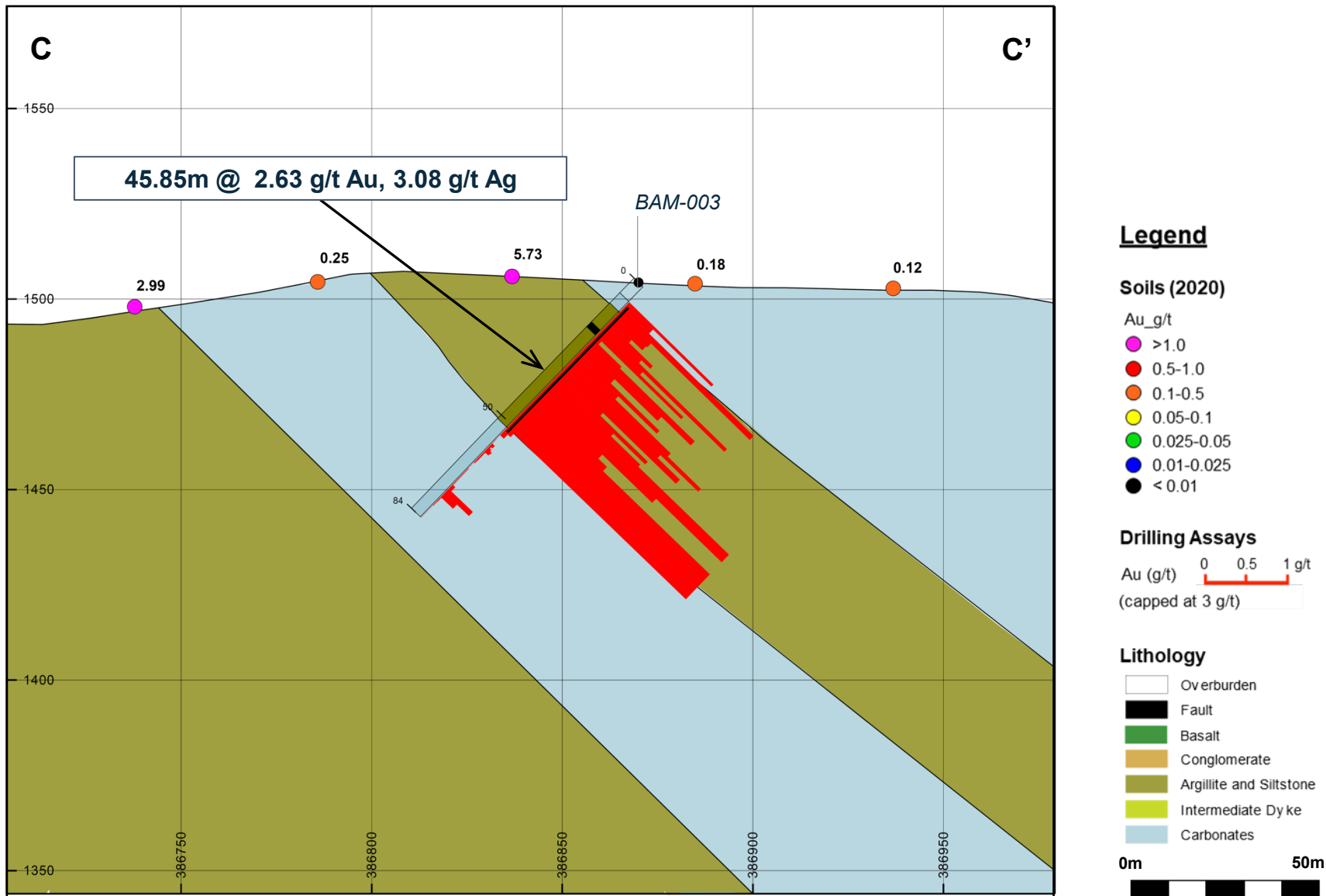
BAM-002; Section B-B' – Looking North



1) See P2 Gold news release dated August 30, 2021 for BAM Property drill results.

BAM - 2021 Drill Program⁽¹⁾

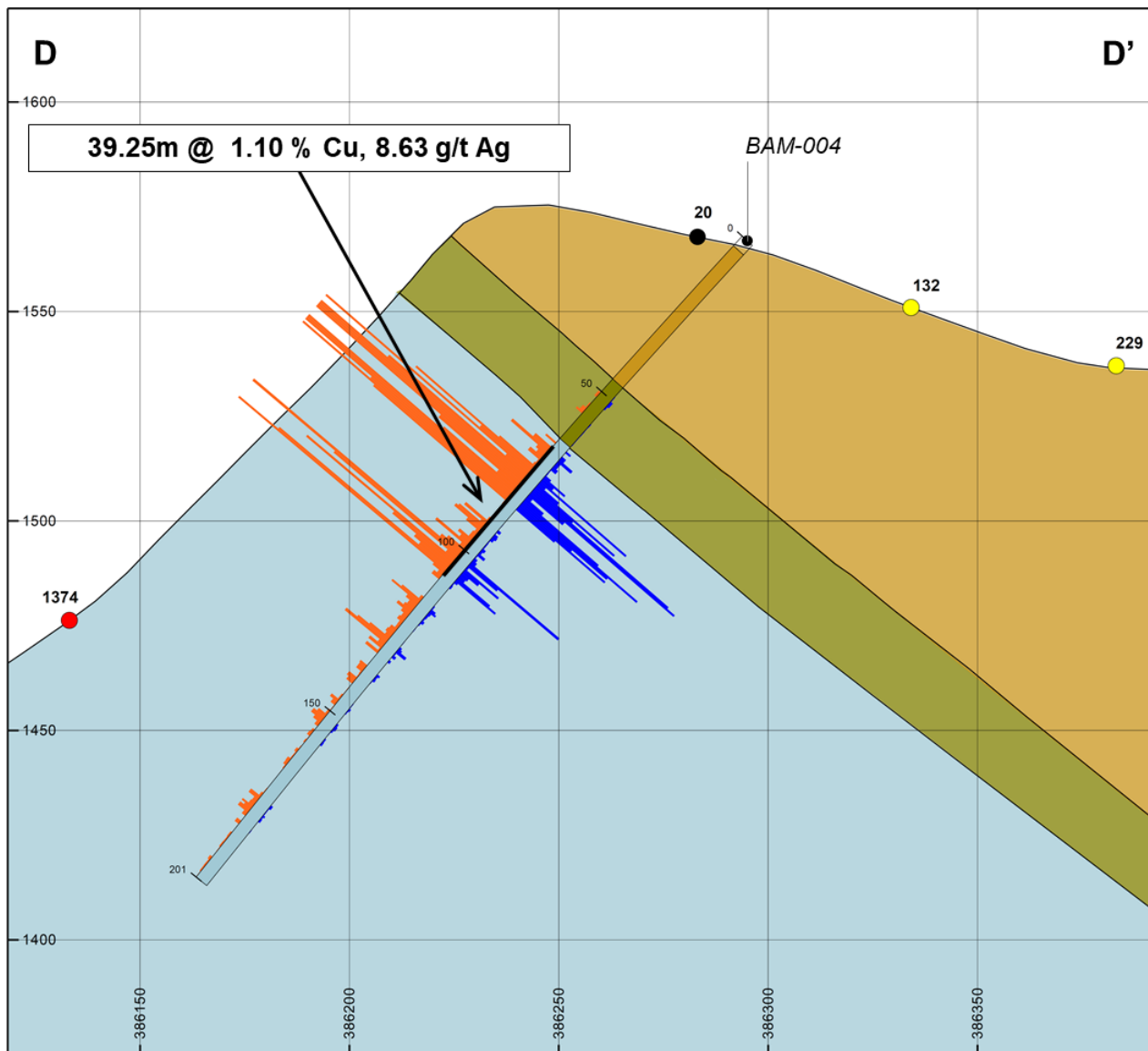
BAM-003; Section C-C' – Looking North



1) See P2 Gold news release dated August 30, 2021 for BAM Property drill results.

BAM - 2021 Drill Program⁽¹⁾

BAM-004; Section D-D' – Looking North



Legend

Soils (2020)

Cu_ppm

- >1,000
- 500-1,000
- 100-500
- 50-100
- < 50

Drilling Assays

Cu (%) 0 0.5 1 %
(capped at 3%)

Ag (ppm) 0 15 30 ppm
(capped at 90 ppm)

Lithology

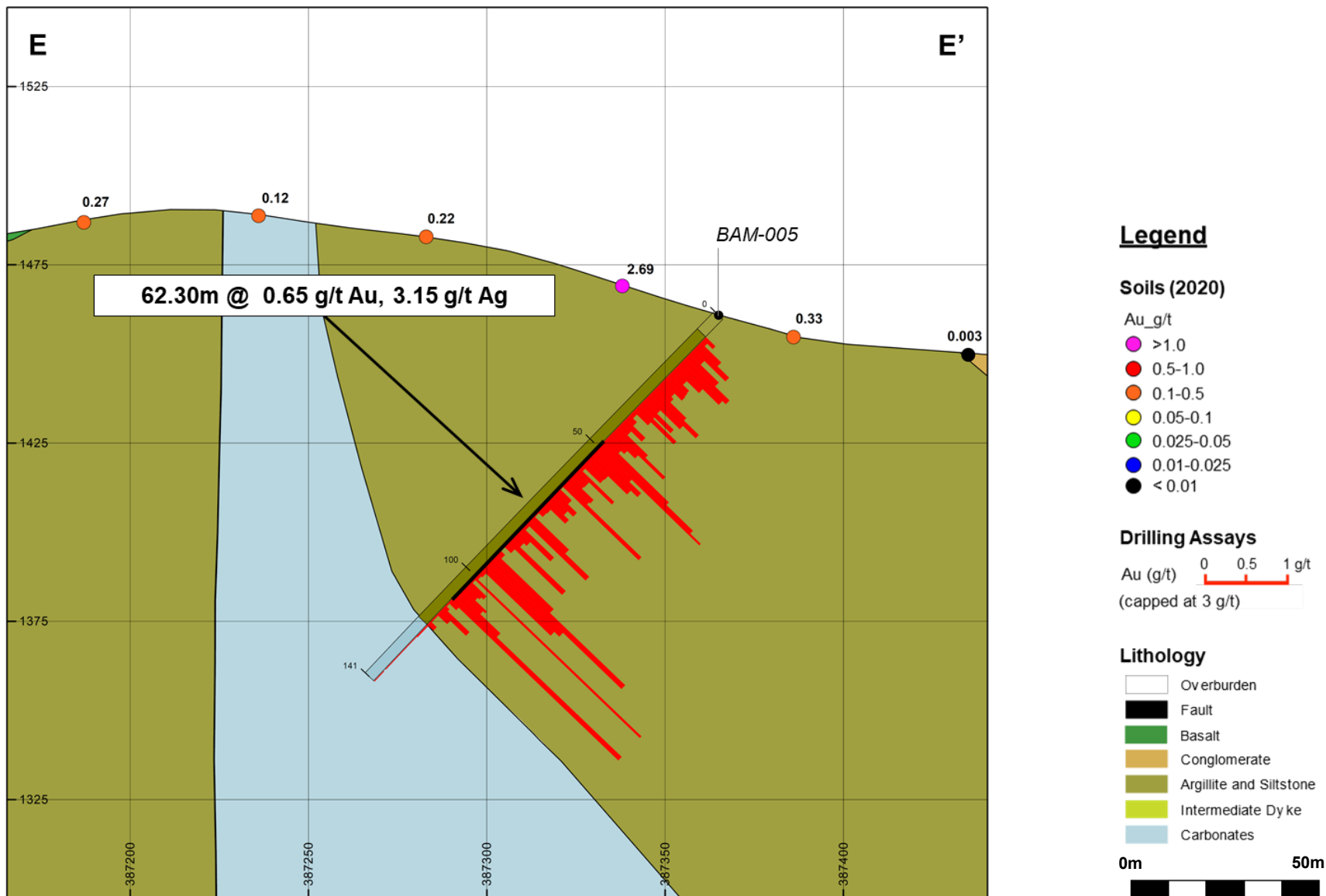
- Overburden
- Fault
- Basalt
- Conglomerate
- Argillite and Siltstone
- Intermediate Dyke
- Carbonates

0m 50m

1) See P2 Gold news release dated October 6, 2021 for BAM Property drill results.

BAM - 2021 Drill Program⁽¹⁾

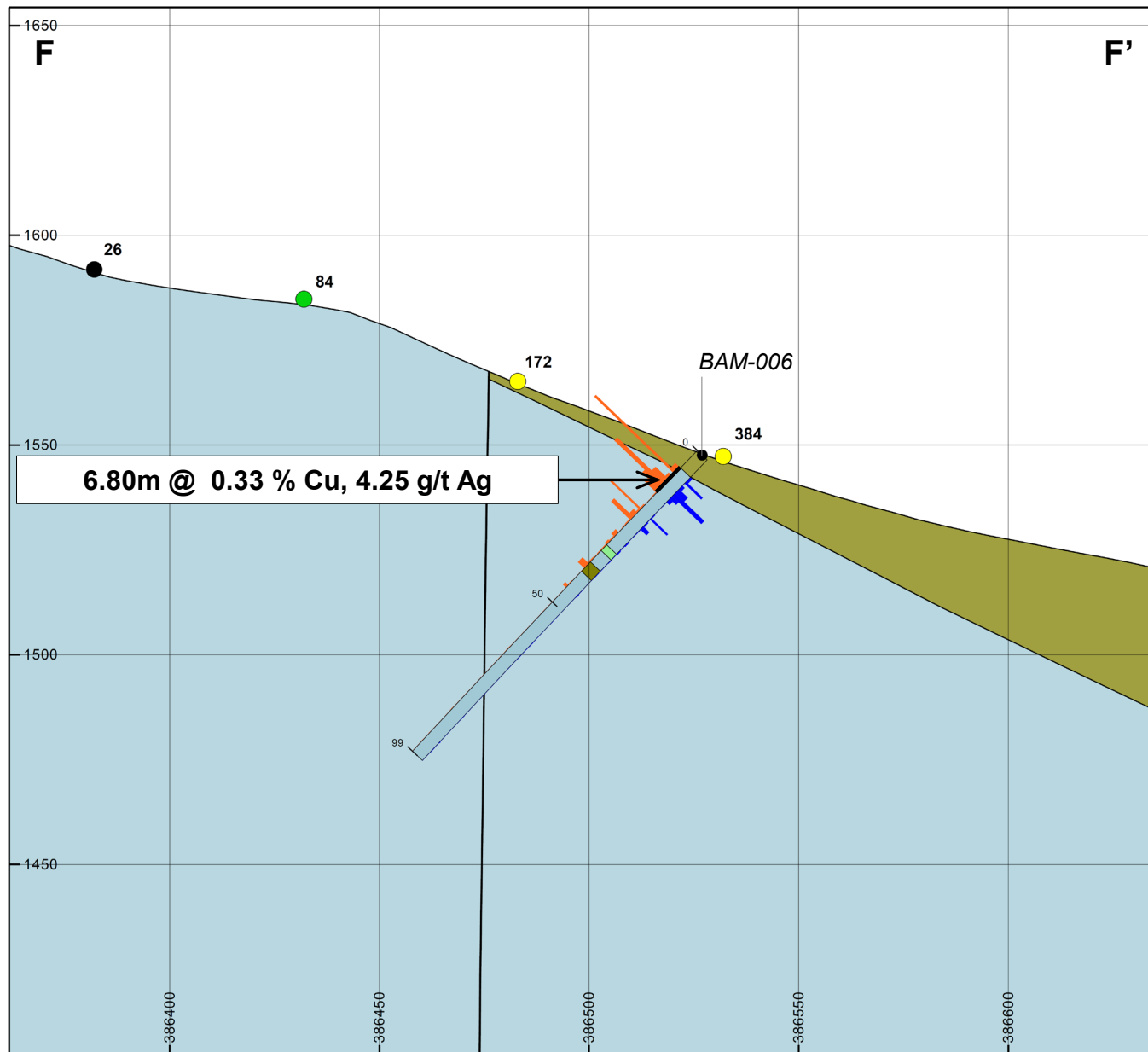
BAM-005; Section E-E' – Looking North



1) See P2 Gold news release dated October 6, 2021 for BAM Property drill results.

BAM Property- 2021 Drill Program

BAM-006; Section F-F' – Looking North



Legend

Soils (2020)

Cu_ppm

- >1,000
- 500-1,000
- 100-500
- 50-100
- < 50

Drilling Assays

Cu (%) 0 0.5 1 %

(capped at 3%)

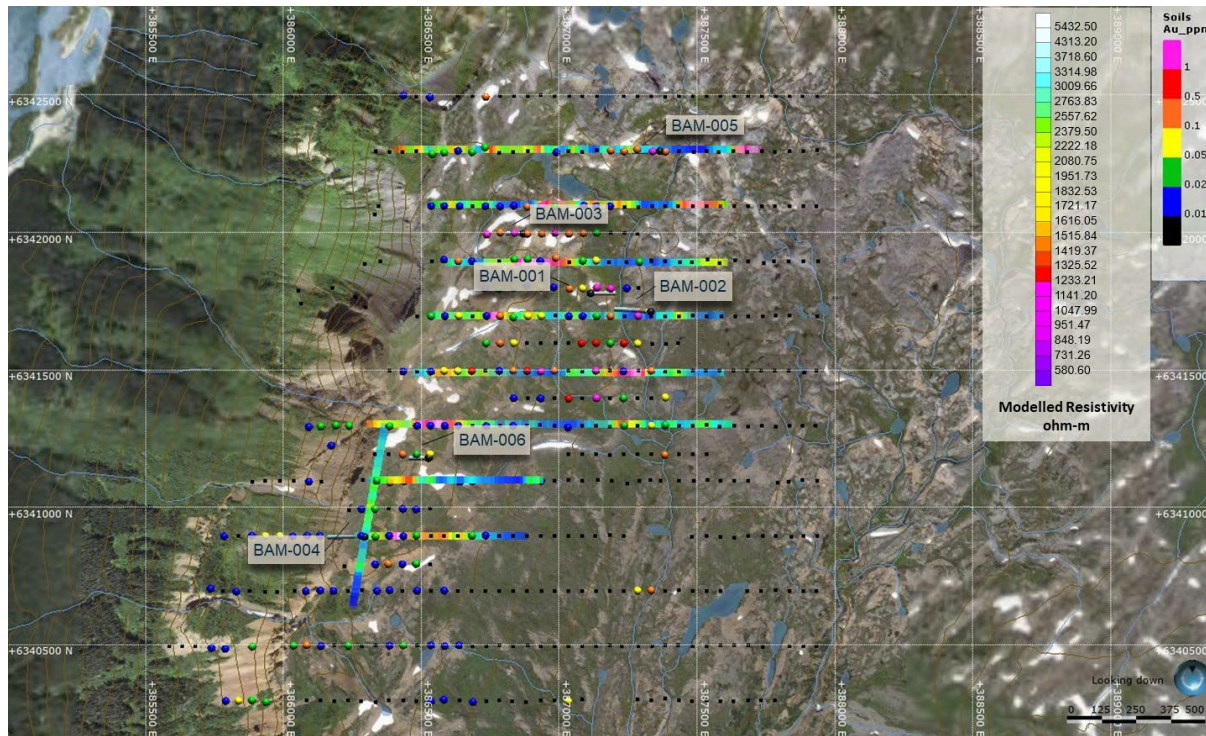
Ag (ppm) 0 15 30 ppm

(capped at 90 ppm)

Lithology

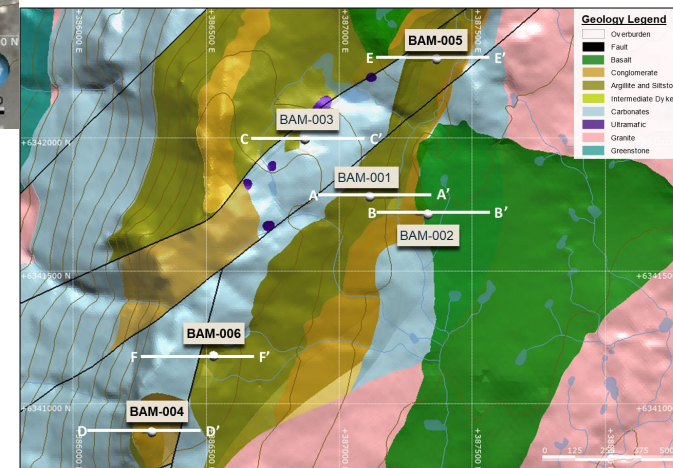
- Overburden
- Fault
- Basalt
- Conglomerate
- Argillite and Siltstone
- Intermediate Dyke
- Carbonates

0m 50m



View looking southeast – Drill setup on BAM-002

Monarch Gold Zone mineralization extends from surface and is open at depth and along strike - located in an area with favorable topography.

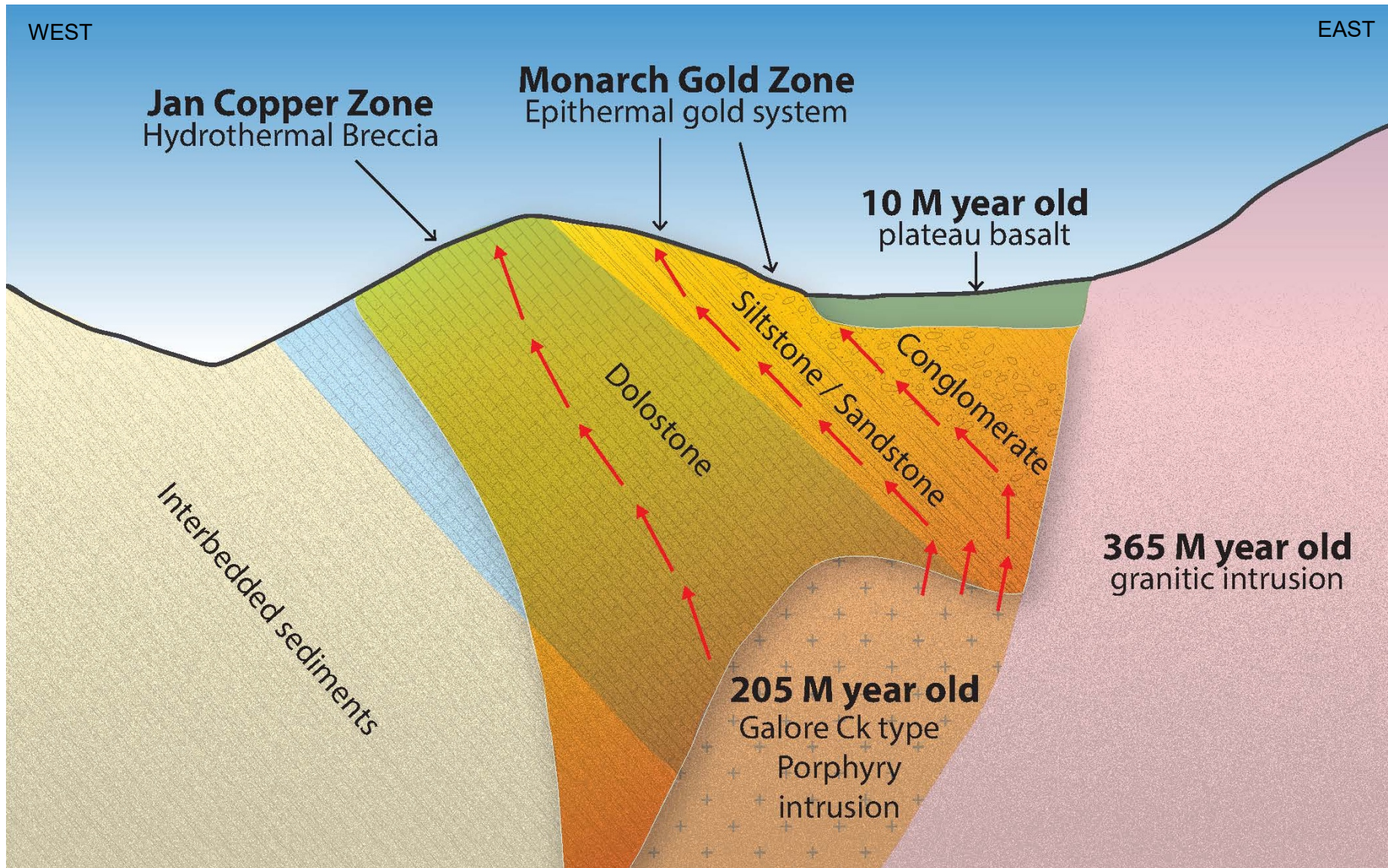


Initial BAM geology map with 2021 drill hole collars

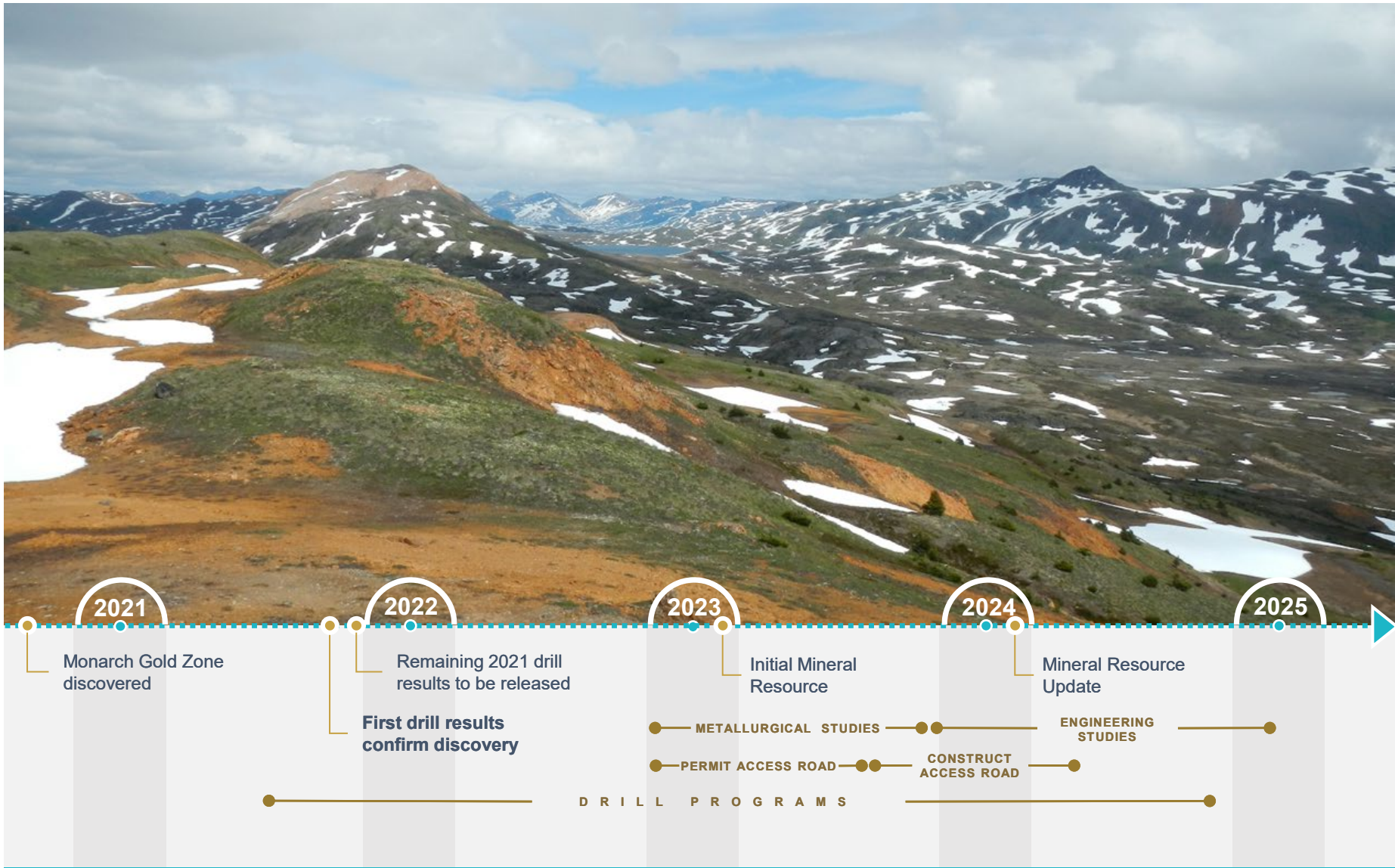
1) See P2 Gold news release dated August 30, 2021 and October 6, 2021 for BAM Property drill results.

BAM Geology

P2 Gold Conceptual Exploration Model



Advancing BAM Strategy and Objectives





TSX-V:PGLD
FRA:4Z9

P2 Gold Inc.
1100, 355 Burrard Street
Vancouver, BC
V6C 2G8
www.p2gold.com

Contact: Joe Ovsenek, President & CEO
jovsenek@p2gold.com

info@p2gold.com